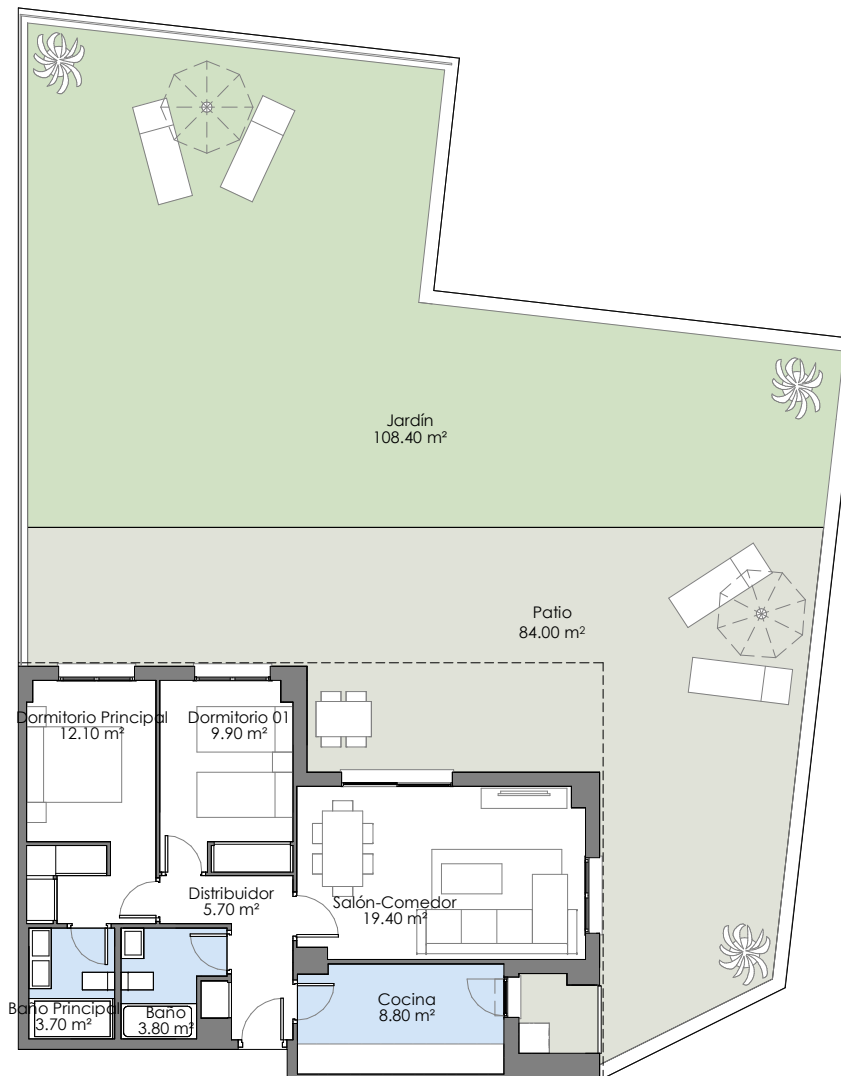


VÍA ÁGORA

MAIRENA DEL ALJARAFE



Parcela A-4 Sector SR-4

BLOQUE 3/PORTAL 8/PLANTA 0/PUERTA A

| | |
|--------------------------|-----------------------|
| TOTAL S. CONST. INT | 76.21 m ² |
| TOTAL S. CON.+ZZ.CC. EXT | 103.26 m ² |

| | |
|--------------------------|-----------------------|
| Total S. Construida Int. | 76.21 m ² |
| Total S. Construida Ext. | 204.60 m ² |

TOTAL S. ÚTIL CERRADA

| | |
|----------|-----------------------|
| Patio | 81.70 m ² |
| Lavadero | 2.30 m ² |
| Jardín | 108.40 m ² |

TOTAL S. ÚTIL

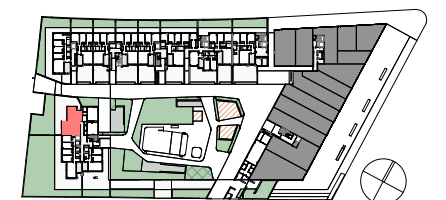
255.80 m²

SUPERFICIES ÚTILES INTERIORES

| | |
|----------------------|----------------------|
| Salón-Comedor | 19.40 m ² |
| Cocina | 8.80 m ² |
| Distribuidor | 5.70 m ² |
| Dormitorio Principal | 12.10 m ² |
| Baño Principal | 3.70 m ² |
| Dormitorio 01 | 9.90 m ² |
| Baño | 3.80 m ² |

DECRETO 218/2005

| | |
|-----------------------|----------------------|
| Superficie útil | 70.13 m ² |
| Superficie construida | 83.83 m ² |



Planta Baja
www.VIAAGORA.com